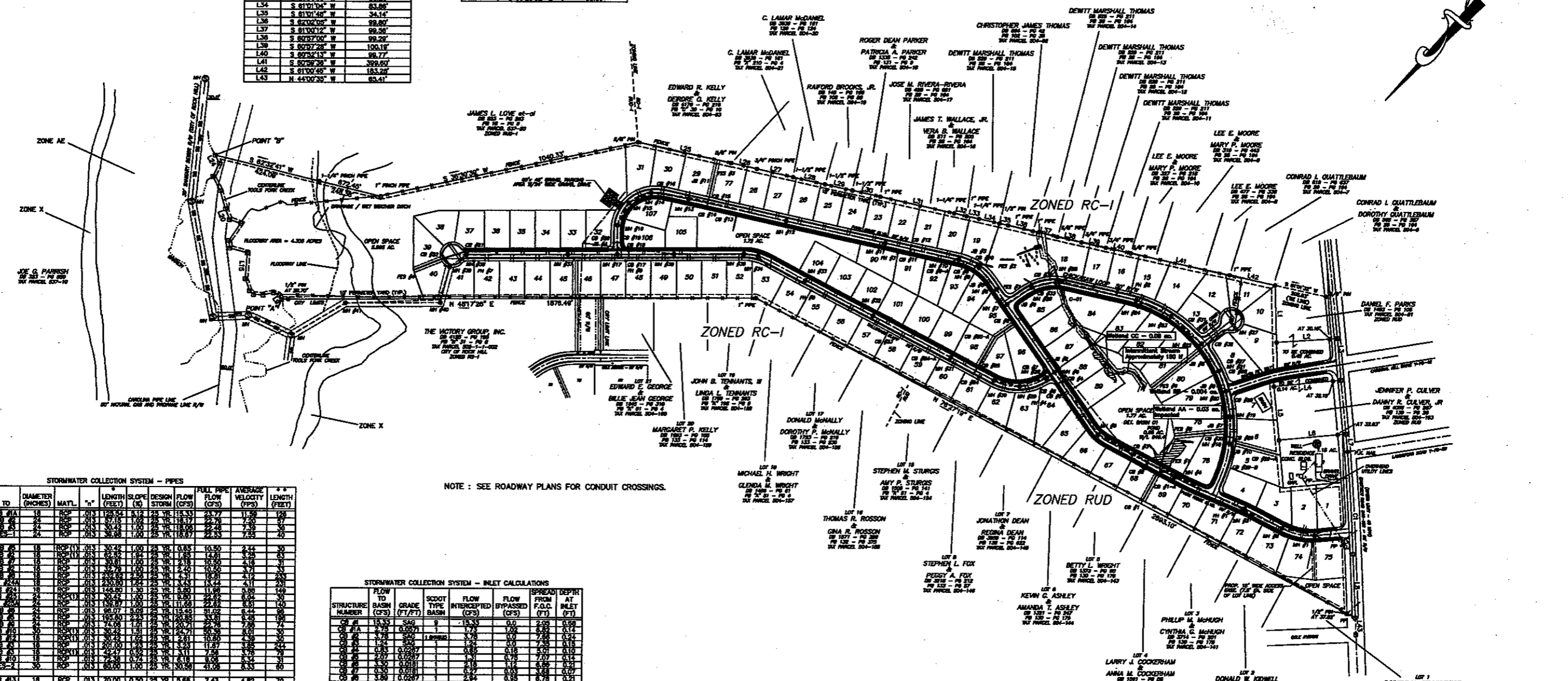


LINE	DIRECTION	DISTANCE
L1	N 43°18'12" W	228.31
L2	S 44°28'30" W	240.00
L3	N 46°47'08" W	168.18
L4	N 42°48'14" E	268.00
L5	N 47°11'08" E	214.10
L6	S 42°47'20" W	263.00
L7	N 47°11'32" W	70.92
L8	N 44°00'35" W	252.68
L9	S 81°00'48" W	378.07
L10	S 81°00'00" W	104.85
L11	S 81°04'38" W	148.71
L12	S 81°01'04" W	188.70
L13	S 81°02'00" W	110.79
L14	S 81°20'04" W	112.17
L15	S 80°58'02" W	300.63
L16	S 81°01'59" W	50.11
L17	S 81°14'05" W	50.25
L18	S 81°01'04" W	83.86
L19	S 81°01'04" W	34.14
L20	S 81°02'00" W	59.87
L21	S 81°00'12" W	98.26
L22	S 80°57'00" W	98.26
L23	S 80°57'28" W	100.18
L24	S 80°54'13" W	98.77
L25	S 80°58'28" W	399.67
L26	S 81°00'45" W	183.28
L27	N 44°00'35" W	82.41

LINE	DIRECTION	DISTANCE
L28	S 73°37'33" E	18.76
L29	N 70°45'13" E	26.32
L30	N 38°42'28" E	41.29
L31	N 38°28'10" E	38.09
L32	S 80°38'38" E	21.92
L33	S 81°40'41" E	30.33
L34	S 37°18'52" E	102.63
L35	N 63°31'52" E	70.23
L36	S 48°23'33" E	31.43
L37	S 07°07'28" E	81.02
L38	N 68°38'48" E	45.78
L39	S 80°38'11" E	38.32
L40	S 57°34'34" E	78.12
L41	S 68°38'34" E	82.94
L42	S 19°31'10" E	58.67
L43	S 68°23'02" E	35.59

CURVE	RADIUS	LENGTH	CHORD	BEARING	DELTA
C1	1077.48	408.20	1408.18	S 40°30'00" E	29°34'



NOTE: SEE ROADWAY PLANS FOR CONDUIT CROSSINGS.

FROM	TO	DIAMETER (INCHES)	MATL.	"n"	LENGTH (FEET)	SLOPE (%)	DESIGN FLOW (CFS)	FULL PIPE FLOW (CFS)	AVERAGE VELOCITY (FPS)	LENGTH (FEET)
CS #1	CS #1A	18	RCP	0.015	128.54	5.12	24.78	115.33	3.77	128.54
CS #1A	CS #2	24	RCP	0.015	97.18	1.08	28.76	118.19	2.75	97.18
CS #2	CS #3	24	RCP	0.015	30.42	1.00	28.76	118.08	2.28	30.42
CS #3	CS #4	24	RCP	0.015	36.98	1.00	28.76	118.07	2.33	36.98
CS #4	CS #5	18	RCP	0.015	30.42	1.00	28.76	118.08	2.28	30.42
CS #5	CS #6	18	RCP	0.015	97.18	1.08	28.76	118.19	2.75	97.18
CS #6	CS #7	18	RCP	0.015	128.54	5.12	24.78	115.33	3.77	128.54
CS #7	CS #8	18	RCP	0.015	128.54	5.12	24.78	115.33	3.77	128.54
CS #8	CS #9	18	RCP	0.015	128.54	5.12	24.78	115.33	3.77	128.54
CS #9	CS #10	18	RCP	0.015	128.54	5.12	24.78	115.33	3.77	128.54
CS #10	CS #11	18	RCP	0.015	128.54	5.12	24.78	115.33	3.77	128.54
CS #11	CS #12	18	RCP	0.015	128.54	5.12	24.78	115.33	3.77	128.54
CS #12	CS #13	18	RCP	0.015	128.54	5.12	24.78	115.33	3.77	128.54
CS #13	CS #14	18	RCP	0.015	128.54	5.12	24.78	115.33	3.77	128.54
CS #14	CS #15	18	RCP	0.015	128.54	5.12	24.78	115.33	3.77	128.54
CS #15	CS #16	18	RCP	0.015	128.54	5.12	24.78	115.33	3.77	128.54
CS #16	CS #17	18	RCP	0.015	128.54	5.12	24.78	115.33	3.77	128.54
CS #17	CS #18	18	RCP	0.015	128.54	5.12	24.78	115.33	3.77	128.54
CS #18	CS #19	18	RCP	0.015	128.54	5.12	24.78	115.33	3.77	128.54
CS #19	CS #20	18	RCP	0.015	128.54	5.12	24.78	115.33	3.77	128.54
CS #20	CS #21	18	RCP	0.015	128.54	5.12	24.78	115.33	3.77	128.54
CS #21	CS #22	18	RCP	0.015	128.54	5.12	24.78	115.33	3.77	128.54
CS #22	CS #23	18	RCP	0.015	128.54	5.12	24.78	115.33	3.77	128.54
CS #23	CS #24	18	RCP	0.015	128.54	5.12	24.78	115.33	3.77	128.54
CS #24	CS #25	18	RCP	0.015	128.54	5.12	24.78	115.33	3.77	128.54
CS #25	CS #26	18	RCP	0.015	128.54	5.12	24.78	115.33	3.77	128.54
CS #26	CS #27	18	RCP	0.015	128.54	5.12	24.78	115.33	3.77	128.54
CS #27	CS #28	18	RCP	0.015	128.54	5.12	24.78	115.33	3.77	128.54
CS #28	CS #29	18	RCP	0.015	128.54	5.12	24.78	115.33	3.77	128.54
CS #29	CS #30	18	RCP	0.015	128.54	5.12	24.78	115.33	3.77	128.54
CS #30	CS #31	18	RCP	0.015	128.54	5.12	24.78	115.33	3.77	128.54
CS #31	CS #32	18	RCP	0.015	128.54	5.12	24.78	115.33	3.77	128.54
CS #32	CS #33	18	RCP	0.015	128.54	5.12	24.78	115.33	3.77	128.54
CS #33	CS #34	18	RCP	0.015	128.54	5.12	24.78	115.33	3.77	128.54
CS #34	CS #35	18	RCP	0.015	128.54	5.12	24.78	115.33	3.77	128.54
CS #35	CS #36	18	RCP	0.015	128.54	5.12	24.78	115.33	3.77	128.54
CS #36	CS #37	18	RCP	0.015	128.54	5.12	24.78	115.33	3.77	128.54
CS #37	CS #38	18	RCP	0.015	128.54	5.12	24.78	115.33	3.77	128.54
CS #38	CS #39	18	RCP	0.015	128.54	5.12	24.78	115.33	3.77	128.54
CS #39	CS #40	18	RCP	0.015	128.54	5.12	24.78	115.33	3.77	128.54
CS #40	CS #41	18	RCP	0.015	128.54	5.12	24.78	115.33	3.77	128.54
CS #41	CS #42	18	RCP	0.015	128.54	5.12	24.78	115.33	3.77	128.54
CS #42	CS #43	18	RCP	0.015	128.54	5.12	24.78	115.33	3.77	128.54
CS #43	CS #44	18	RCP	0.015	128.54	5.12	24.78	115.33	3.77	128.54
CS #44	CS #45	18	RCP	0.015	128.54	5.12	24.78	115.33	3.77	128.54
CS #45	CS #46	18	RCP	0.015	128.54	5.12	24.78	115.33	3.77	128.54
CS #46	CS #47	18	RCP	0.015	128.54	5.12	24.78	115.33	3.77	128.54
CS #47	CS #48	18	RCP	0.015	128.54	5.12	24.78	115.33	3.77	128.54
CS #48	CS #49	18	RCP	0.015	128.54	5.12	24.78	115.33	3.77	128.54
CS #49	CS #50	18	RCP	0.015	128.54	5.12	24.78	115.33	3.77	128.54
CS #50	CS #51	18	RCP	0.015	128.54	5.12	24.78	115.33	3.77	128.54
CS #51	CS #52	18	RCP	0.015	128.54	5.12	24.78	115.33	3.77	128.54
CS #52	CS #53	18	RCP	0.015	128.54	5.12	24.78	115.33	3.77	128.54
CS #53	CS #54	18	RCP	0.015	128.54	5.12	24.78	115.33	3.77	128.54
CS #54	CS #55	18	RCP	0.015	128.54	5.12	24.78	115.33	3.77	128.54
CS #55	CS #56	18	RCP	0.015	128.54	5.12	24.78	115.33	3.77	128.54
CS #56	CS #57	18	RCP	0.015	128.54	5.12	24.78	115.33	3.77	128.54
CS #57	CS #58	18	RCP	0.015	128.54	5.12	24.78	115.33	3.77	128.54
CS #58	CS #59	18	RCP	0.015	128.54	5.12	24.78	115.33	3.77	128.54
CS #59	CS #60	18	RCP	0.015	128.54	5.12	24.78	115.33	3.77	128.54
CS #60	CS #61	18	RCP	0.015	128.54	5.12	24.78	115.33	3.77	128.54
CS #61	CS #62	18	RCP	0.015	128.54	5.12	24.78	115.33	3.77	128.54
CS #62	CS #63	18	RCP	0.015	128.54	5.12	24.78	115.33	3.77	128.54
CS #63	CS #64	18	RCP	0.015	128.54	5.12	24.78	115.33	3.77	128.54
CS #64	CS #65	18	RCP	0.015	128.54	5.12	24.78	115.33	3.77	128.54
CS #65	CS #66	18	RCP	0.015	128.54	5.12	24.78	115.33	3.77	128.54
CS #66	CS #67	18	RCP	0.015	128.54	5.12	24.78	115.33	3.77	128.54
CS #67	CS #68	18	RCP	0.015	128.54	5.12	24.78	115.33	3.77	128.54
CS #68	CS #69	18	RCP	0.015	128.54	5.12	24.78	115.33	3.77	128.54
CS #69	CS #70	18	RCP	0.015	128.54	5.12	24.78	115.33	3.77	128.54
CS #70	CS #71	18	RCP	0.015	128.54	5.12	24.78	115.33	3.77	128.54
CS #71	CS #72	18	RCP	0.015	128.54	5.12	24.78	115.33	3.77	128.54
CS #72	CS #73	18	RCP	0.015	128.54	5.12	24.78	115.33	3.77	128.54
CS #73	CS #74	18	RCP	0.015	128.54	5.12	24.78	115.33	3.77	128.54
CS #74	CS #75	18	RCP	0.015	128.54	5.12	24.78	115.33	3.77	128.54
CS #75	CS #76	18	RCP	0.015	128.54	5.12	24.78	115.33	3.77	128.54
CS #76	CS #77	18	RCP	0.015	128.54	5.12	24.78	115.33	3.77	128.54
CS #77	CS #78	18	RCP	0.015	128.54	5.12	24.78	115.33	3.77	128.54
CS #78	CS #79	18	RCP	0.015	128.54	5.12	24.78	115.33	3.77	128.54
CS #79	CS #80	18	RCP	0.015	128.54	5.12	24.78	115.33	3.77	128.54
CS #80	CS #81	18	RCP	0.015	128.54	5.12	24.78	115.33	3.77	128.54
CS #81	CS #82	18	RCP	0.015	128.54	5.12	24.78	115.33	3.77	128.54
CS #82	CS #83	18	RCP	0.015	128.54	5.12	24.78	115.33	3.77	128.54
CS #83	CS #84	18	RCP	0.015	128.54	5.12	24.78	115.33	3.77	128.54
CS #84	CS #85	18	RCP	0.015	128.54	5.12	24.78	115.33	3.77	128.54
CS #85	CS #86	18	RCP	0.015	128.54	5.12	24.78	115.33	3.77	128.54
CS #86	CS #87	18	RCP	0.015	128.54	5.12	24.78	115.33	3.77	128.54
CS #87	CS #88	18	RCP	0.015	128.54	5.12	24.78	115.33	3.77	128.54
CS #88	CS #89	18	RCP	0.015	128.54	5.12	24.78	115.33	3.77	128.54
CS #89	CS #90	18	RCP	0.015	128.54	5.12	24.78	115.33	3.77	128.54
CS #90	CS #91	18	RCP	0.015	128.54	5.12	24.78	115.33	3.77	128.54
CS #91	CS #92	18	RCP	0.015	128.54	5.12	24.78	115.33	3.77	128.54
CS #92	CS #93	18	RCP	0.015	128.54	5.12	24.78	115.33	3.77	128.54
CS #93	CS #94	18	RCP	0.015	128.54	5.12	24.78</			